

es or ir es



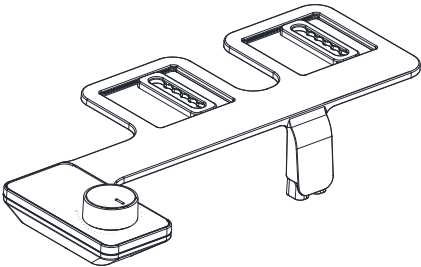
Table of Contents

Bidet Attachment OWNER'S MANUAL

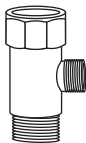
03	PARTS LIST
04	PRODUCT SPECS
04	INSTALLATION
09	OPERATION
10	MAINTENANCE
11	WARRANTY

Parts List

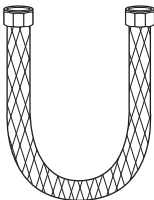
WHAT'S IN THE BOX?



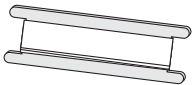
Bidet attachment with turn-dial control and adjustable brackets



T-Valve connector
($\frac{7}{8}$ " x $\frac{7}{8}$ " x $\frac{3}{8}$ ")



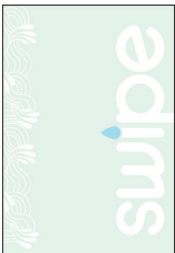
25" braided metal
bidet hose



Teflon tape

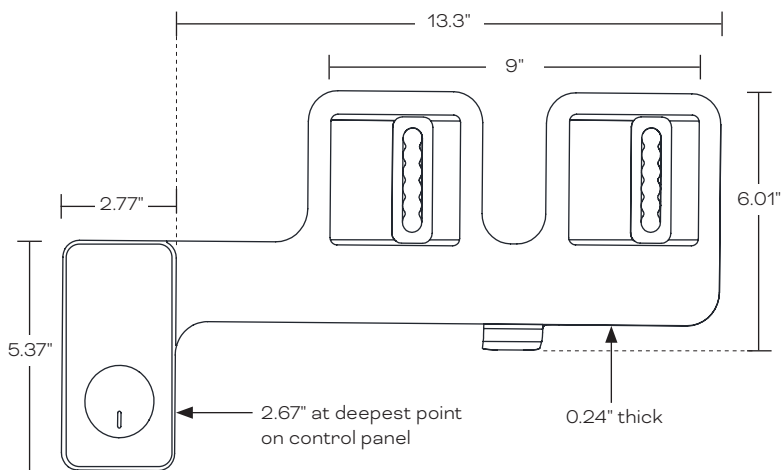


Large rubber washer



User's manual

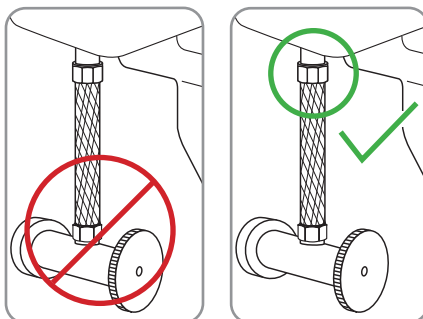
Product Specs



Installation

IMPORTANT

Please be advised that the provided T-Valve should be installed at the Fill Valve under the toilet tank, and NOT at the cold water supply coming from the wall.



Installation (cont.)

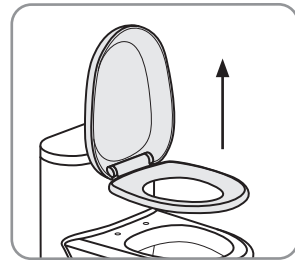
BEFORE INSTALLATION

Check Water Supply Line

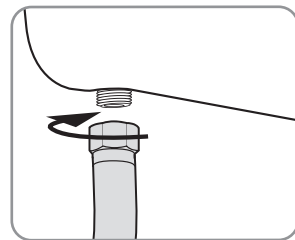
Check the water supply line that connects the toilet tank fill valve to the water shutoff valve at the wall. If it is a rigid pipe, you will need to purchase a flexible water supply hose to replace it before installing the Swipe. The length of the hose may vary, and the top connection size should be $\frac{7}{8}$ " Ballcock to connect to the T-valve that you will install under the toilet tank, and the bottom connection will vary (most common are $\frac{3}{8}$ " and $\frac{1}{2}$ " female compression).

INSTALLING THE BIDET ATTACHMENT

1. Remove existing toilet seat
 - a. Lift hinge covers and use flathead or Phillips head screwdriver to remove the mounting bolts. Alternatively, you may need to loosen mounting bolts underneath the seat.
 - b. Remove the toilet seat and set the seat, mounting bolts and hardware aside.
2. Turn off water supply valve and flush toilet
 - a. Turn off water supply at the wall to stop flow of water.
 - b. Flush toilet and hold down handle to completely empty toilet tank.
 - c. Disconnect water supply hose from the fill valve under the toilet tank.



Step 1b

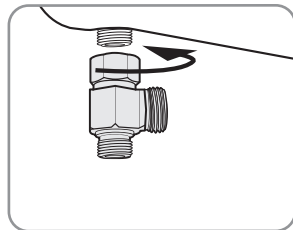


Step 2c

Installation (cont.)

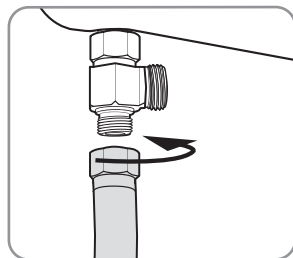
3. Connect 7/8" T-Valve to Water Supply Line and Fill Valve Under Toilet Tank.

- a. Install the 7/8" T-valve with one or both of the rubber washers to the incoming water connection on the bottom of the toilet tank.



Step 3a

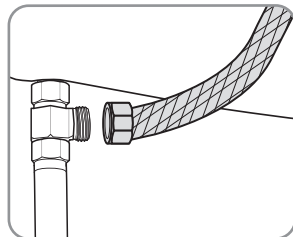
- b. Connect the cold water supply line coming from the wall to the bottom of the T-valve.



Step 3b

4. Connect Bidet Hose to T-Valve

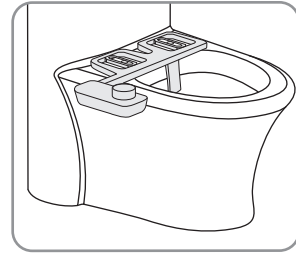
- a. Connect one end of the braided metal bidet hose to the remaining open side of the installed T-valve.



Step 4a

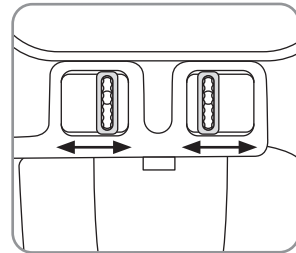
5. Install Bidet Attachment on Toilet

- a. Place bidet attachment on the toilet so the nozzle is as close to the back of the toilet bowl as it will go. This will vary by toilet.



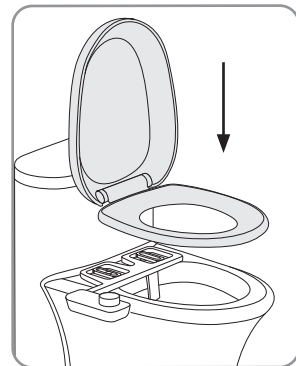
Step 5a

- b. Make sure the adjustable brackets line up with the holes in the toilet fixture. You may need to move the adjustable brackets accordingly to line up properly.



Step 5b

- c. Replace the toilet seat on top of bidet attachment and secure using original toilet seat hardware. Make sure to tighten so that the bidet attachment and seat do not move.

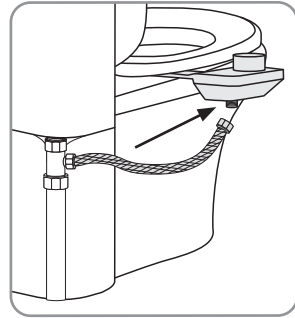


Step 5c

Installation (cont.)

6. Connect Bidet Hose to Bidet Attachment

- a. Connect open end of bidet hose to the connection on the bottom of the bidet attachment.



Step 6a

7. Turn on Water Supply and check for leaks

- a. Open the main water supply valve slowly and check for leaks.
- b. Wait 5-10 minutes, check again and if there are no leaks continue.

Note: if there is any leaking, check all rubber washers and make sure all water connections are tight and secure. If necessary, you can use plumbers tape for any leaking connections.

Operation

USING THE SWIPE

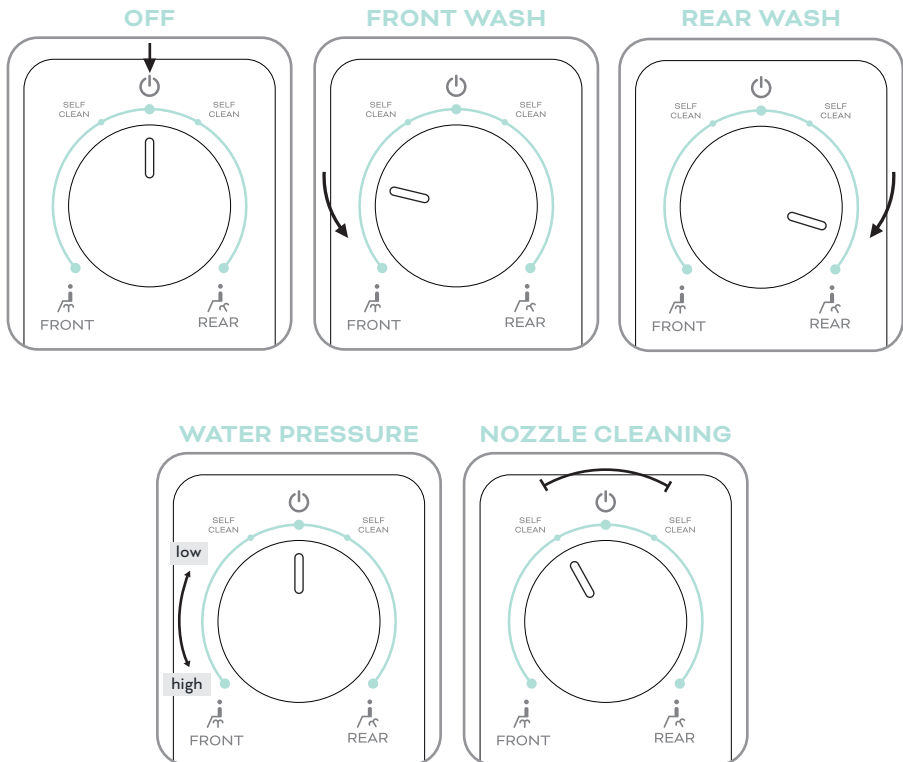
To engage the front wash setting, turn the dial counterclockwise towards the “FRONT” wash zone.

- The further the dial is turned, the higher the water pressure will be.
- To lower the water pressure, turn the nozzle back towards the center.

To engage the rear wash setting, turn the dial clockwise toward the “REAR” wash zone.

- The further the dial is turned, the higher the water pressure will be.
- To lower the water pressure, turn the nozzle back towards the center.

To clean the bidet nozzle, turn the control dial towards the “SELF CLEAN” position and water will wash over the nozzles.



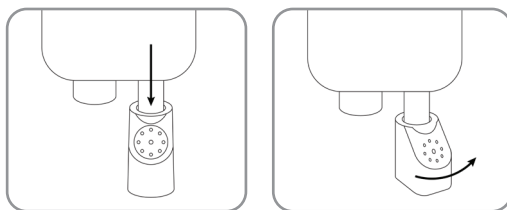
Maintenance

To clean the nozzles, gently pull down on the head of the nozzle, and use a toothbrush or soft cloth and mild detergent (such as dish soap).

More intensive nozzle cleaning can be performed by removing the spray heads:

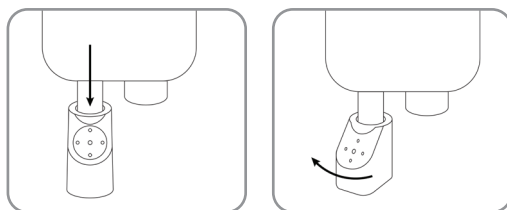
For right nozzle (Front Wash), gently extend, hold, and twist right to remove the nozzle cap. To reinsert nozzle cap, hold with the spray holes facing right and gently push up until it's secured. Twist the cap left to lock in place with the nozzles facing forward.

FRONT WASH



For left nozzle (Rear Wash), gently extend, hold, and twist left to remove the nozzle cap. To reinsert nozzle cap, hold with spray holes facing left and gently push up until it's secured. Twist the cap right to lock in place with the nozzles facing forward.

REAR WASH



To clean the Swipe, use a mild cleaner such as Simple Green or Windex spray. Do not scrub or use harsh, abrasive products to clean the Swipe, as they may scratch the product.

SHORT TERM NON-USE

If the product will not be used for more than a few weeks, you may consider shutting the water supply off at the wall for extra precaution.

Warranty

Mogul Merch warrants that all products (excluding consumable items) shall be free from defects in material and workmanship under normal use and service.

Swipe Residential One-Year Limited Warranty

100% Coverage of all parts for the entire product for the first year from original date of purchase.

Exclusions and Limitations

1. Mogul Merch warrants its products to be free from manufacturing defects under normal use and service. This warranty is extended only to the ORIGINAL PURCHASER.

2. Mogul Merch's obligations under this warranty are limited to replacement, at Mogul Merch's option, of products or parts found to be defective, provided that such products were properly installed and used in accordance with instructions. Mogul Merch reserves the right to make such inspections as may be necessary in order to determine the cause of the defect.

3. Mogul Merch is not responsible for the cost of removal, return (shipping) and/or re-installation of products. This warranty does NOT apply to:

- Damage or loss which occurs during shipment.
- Damage or loss sustained through any natural or man-made causes beyond the control of Mogul Merch, including but not limited to fire, earthquake, floods, etc.
- Damage or loss resulting from sediments or foreign matter contained in a water system.
- Damage or loss resulting from negligent or improper installation including installation of a unit in a harsh or hazardous environment.
- Damage or loss resulting from removal, improper repair, modification of the product, or improper maintenance including damage caused by chlorine or chlorine related products
- Damage or loss resulting from electrical surges, electrical outages, lightning strikes, or other acts which are not the fault of Mogul Merch or which the Product is not specified to tolerate.

4. This warranty gives you specific legal rights. You may have other rights which vary from state to state.

THIS WRITTEN WARRANTY IS THE ONLY WARRANTY MADE BY MOGUL MERCH. REPLACEMENT AS PROVIDED UNDER THIS WARRANTY SHALL BE THE EXCLUSIVE REMEDY AVAILABLE TO THE PURCHASER. MOGUL MERCH SHALL NOT BE RESPONSIBLE FOR LOSS OF USE OF THE PRODUCT OR FOR OTHER INCIDENTAL, SPECIAL, FOR CONSEQUENTIAL DAMAGES OR EXPENSES INCURRED BY THE PURCHASER OR FOR LABOR OR OTHER COSTS DUE TO INSTALLATION OR REMOVAL OR COSTS OF REPAIRS BY OTHERS, OR FOR ANY OTHER EXPENSE NOT SPECIFICALLY STATED ABOVE. EXCEPT TO THE EXTENT PROHIBITED BY APPLICABLE LAW, ANY IMPLIED WARRANTIES, INCLUDING THAT OF MERCHANTABILITY, ARE EXPRESSLY LIMITED TO THE DURATION OF THIS WARRANTY. SOME STATES DO NOT ALLOW LIMITATIONS, SO THE ABOVE LIMITATION AND EXCLUSION MAY NOT APPLY TO YOU.

How to Obtain Replacement Parts

To obtain parts under this warranty, please contact Mogul Merch at support@mogulmerch.gg, with proof of purchase in the form of a copy of the original receipt.

For any other questions and support please email support@mogulmerch.gg

**MOGUL
MERCH**

support@mogulmerch.gg